

The Juglans

October 2011, Volume 22, Issue 4
www.WalnutCouncil.org



Prez Says
Jeremy Parish

We lucked out with great weather for our annual fall field day/meeting back in September at Forest Glen. It served as

a dry run for our field stop there for next year's National Walnut Council Annual Meeting. Thanks to all who attended and helped with this event. We have scheduled field days for November 10 and 11; again at Forest Glen; to complete pruning and crop tree release on the national walnut seed source study and possibly other plots if we have time. All are invited to come and help or to just watch and learn if you would like.

I have noticed that it turned out to be a good year for walnut mast production. White oak acorns are in abundance as well. I have been having this incredible hankering for some hickory nuts, but unfortunately it is an off-year for shagbark. All of this got me thinking of one part of forestry we often forget about; providing good quality seed for nurseries and other tree growers. It is an important role you can play in reforesting the land, while also getting paid. Your forest or plantation may not be suitable for collection, but check for high quality trees in cemeteries, city parks, schools, and other mowed municipal areas. There are devices such as the nut wizard and bag-a-nut that can save your back and precious time. Make sure to call ahead to find out what the nurseries will purchase. Reference directseeding.org, and the Illinois direct seeding handbook provided at il.nrcs.usda.gov for information on seedling care and also planting if you are utilizing the seed for yourself.

In this Issue

Prez Says	Page 1
Council Contacts	Page 2
Why Host an IWC Meeting	Page 3-5
Walnut Farm for Sale	Page 7
Member News	Page 7
Upcoming Events	Page 8

Illinois Walnut Council Board of Directors



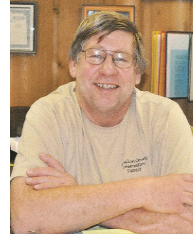
Jeremy Parish, President
 Vermilion County Conservation District
 P.O. Box 951
 Catlin, IL 61817
 (217)918-3032



Dan Schmoker, Vice President
 and Central Region
 #5 Greencastle Circle
 Springfield, IL 62707
 (217)416-1587
 schmoker3@aol.com



Steve Felt, Secretary
 IDNR District Forester
 522 Roberts Lane
 Sherrard, IL 61281
 (309)593-2561
 Stephen.Felt@illinois.gov



Ken Konsis, Treasurer
 Vermilion County Conservation District
 234 Walnut
 Westville, IL 61883
 (217)267-3570
 kkonsis@vccd.org



Doug Bleichner, Past-President
 Manager, LeeLinn Woods
 2290 Knox Road 1000 N
 Yates City, IL 61572
 (309)358-1546
 jere.bleichner@yahoo.com



Dave Asbury, Western Region
 Asbury Sales & Service (Stihl)
 1522 Highway 150 E
 Gilson, IL 61436
 (309)289-2929
 patriciaasbury@yahoo.com



John Torbert, Northern Region
 P.O. Box 74
 Bishop Hill, IL 61419
 (309)337-0879



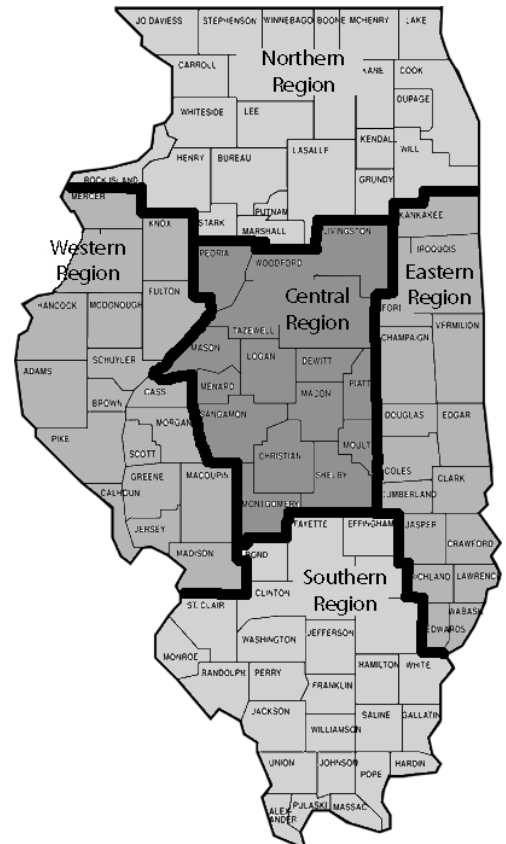
Wayne Wildy, Southern Region
 7718 Wildy Road
 New Athens, IL 62264
 (618)475-2839



Carolyn Kleven, Eastern Region
 1317 N. 300 East Road
 Monticello, IL 61856
 (217)669-2369



Member-at-Large:
 Kate Scott
 12288 Friends Creek Park Road
 Cisco, IL 61830
 (217)795-2104
 prairie.sky83@gmail.com



Why Host The IWC Annual Meeting and Timber Workshop by Rollie Spaniol

Pretend that someone just rang the dinner bell and when you go to the line expecting food you find you were really tricked into a line to sign up to host the Annual Meeting and Timber Workshop. So they tricked you and you are probably thinking ‘Why would I do that.’ Now you are in a line with your peers and your mind really switches into high gear trying to figure out how you are going to get out of this gracefully.

So let’s see if we can understand some of the things that go through your mind. Who will be there and what can they do for me in my woods? How do I usually get professional foresters in my woods and what does it cost?

Experience of the last four years or more shows that there will be four or five of the most interested and experienced District Foresters in Illinois in your woods. There will be four or five professional foresters who are anxious to help you with your timber plans and projects. There will be several inquisitive tree farmers asking you how you accomplished the projects in your timber. These folks will be helping you rethink your goals and what and how to accomplish your goals. They will give you ideas that had not yet occurred to you. They will give you ideas that will contribute to your plan or reinforce your conviction to get out in the timber and get the work done.

It will be invigorating and motivating for you and there will be no direct cost for these services. How else can you get this much help in your timber at one time with all of this enthusiasm helping you with your unique timber issues?

All of this comes to you for the price of the membership and for hosting a workshop to help other walnut growers—what a bargain. Be thankful that you are at the head of the line to sign up.

Look what happened to us. We wanted to learn how to release the walnut and oaks that were interplanted with white pines on 8’x 8’ spacing so the hardwood trees could grow more productively.



This picture demonstrates how the trees that are available to sun can really grow.

Story Continues on Page 4

Why Host The IWC Annual Meeting and Timber Workshop Continued



This picture was taken on a bright sunny day and most of the light is coming from the camera flash. Where is the lush green in this picture in the center of the stand. The limbs are all dead and it is so thick that it is difficult to get in to work.



The lower limbs were removed up about 12'. The limbs were then processed through the chipper. The area between the trees was mowed with a tractor and a 5' mower, then, mowed again with a 50" ZTR mower leaving a comfortable work space. No consideration had been given to tree selection through this process. The pines and walnuts are approximately 30' tall at this time.

This picture shows the tight planting of the trees and the need for tree release. A tree was cut down during the workshop to analyze the rings which showed that the trees growth rate was getting less each year. Thinning was recommended because annual growth was declining.

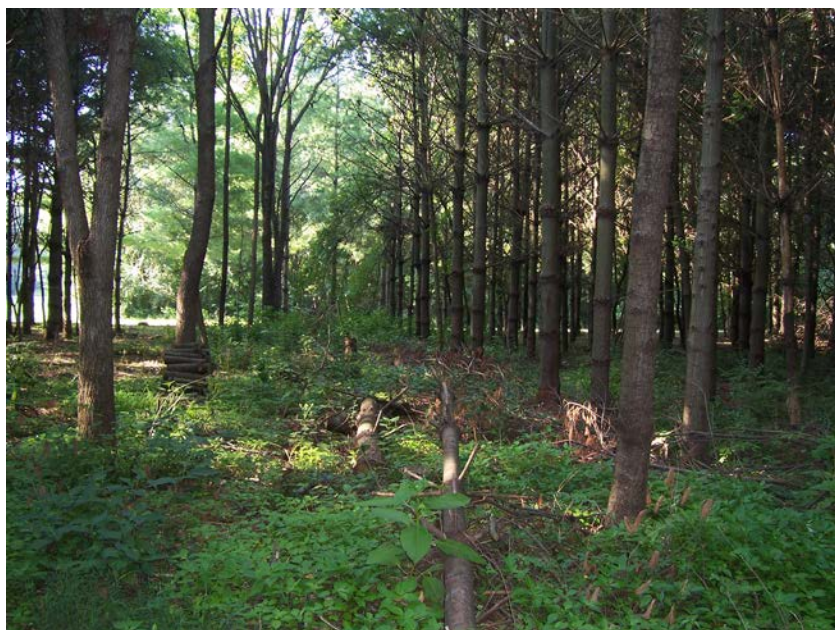


This is a close-up showing the walnut row and the white pine rows on both sides.

Why Host The IWC Annual Meeting and Timber Workshop Continued



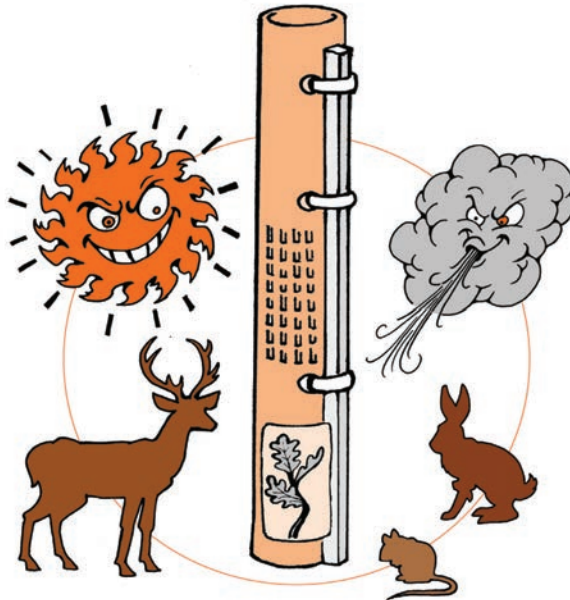
This shows the work-in-process of the row of walnut trees with the white pine trees removed.



This shows the pine on the ground, the stack waiting for the cooler weather when they will be burned in the outdoor boiler for heating the house plus the invasives which are waiting for their doom.

“It’s a Tough World Out There!”

STOP Wildlife, Wind and Weeds
from Killing your Seedlings



Choose Plantra® to make sure they
Survive, Thrive, Succeed!™

Tree Tubes • Bark Protectors • Weed Mats • Fertilizer Packets • Deer Repellent

 **Plantra**®
Plant Like You Mean It

www.plantra.com

800-951-3806

©2011 Plantra, Inc.

The Juglans is a quarterly newsletter published by the Illinois Walnut Council to assist members in their efforts to stay informed on issues, resources, and opportunities. If you are receiving hard copies (paper) of the newsletter, but would like to receive it via e-mail, please send your email address to Lara Darling. If you have information, submissions, and/or suggestions, please send information to *The Juglans* editor:

Lara Darling
Vermilion County Conservation District
22296A Henning Road
Danville, IL 61834
Phone: (217)442-1691
Fax: (217)442-1695
Email: ldarling@vccd.org

Member News and Information

FINANCIAL REPORT

October 1, 2011

Checking Account Beginning Balance (September 10, 2011).....\$5,856.07

Revenue:

IWC Annual Meeting Registrations.....\$88.50

Tool Sales (2 Saws).....\$58.00

Miscellaneous Sales:

Hats.....\$65.00

Tree ID.....\$5.00

Donation (Thiele).....\$200.00

TOTAL REVENUE: \$416.50

Expenditures:

IWC Annual Meeting:

Catered Dinner.....\$287.50

Breakfast/Lunch.....\$124.02

Beverages.....\$28.46

Juglans Newsletter (July).....\$50.00

Item for NWC Annual Meeting Silent Auction.....\$20.00

TOTAL EXPENDITURES: \$509.98

Expenditures over Revenue.....(\$93.48)

Subtract from Beginning Balance.....\$5,762.59

(agrees with bank statement)

Illinois Walnut Council Annual Meeting

Financial Report

Revenue:

Meeting Registrations.....\$300.00

Expenditures:

Expenses itemized in above report....\$439.98

Net Loss: (\$139.98)

Walnut Tree Farm for Sale - Harvard, Illinois

15 acres with a beautiful all-brick house with walk-out basement that was built in 1987 on the property. 700-800 walnut trees have been planted on the land starting in the mid 80's. A small creek flows thru the property and it is very secluded and private. It would be a very unique opportunity for someone who appreciates walnut trees to take over. For more information, please contact John Hartmann at (312)339-8873.

Illinois Walnut Council
The Juglans
c/o Forest Glen Preserve
20301 E 900 North Road
Westville, IL 61883



Please keep your IWC membership address and dues current. Dues paid after October 1st, 2011, will make your membership current through 2012. Payment of \$35.00 should be sent to IWC Headquarters at Forest Glen at the address listed on the return label. You can also pay online at www.WalnutCouncil.org.

Upcoming Events

- October 22:** Indiana Chapter Field Day in LaPorte County, Call 765-583-3501
- October 22:** Field day near Baraboo, Wisconsin. For more information, contact Paul Kloppenburg, district forester at 608-355-4476 or e-mail Paul.Kloppenburg@wisconsin.gov
- October 27-28:** Hardwood Log, Lumber, & Tree Grading workshop; Registration fee \$150 Contact Dan Cassens 765-412-6844 or e-mail dcassens@purdue.edu
- November 4-5:** Annual Indiana forest landowner conference in Jasper, Indiana. Check www.ifwoa.org for details

